

EJUST provides affordable housing for employees and students inside the university campus. As it has a plan to build a new dorm to accommodate the expected increase of students.



Site Plan

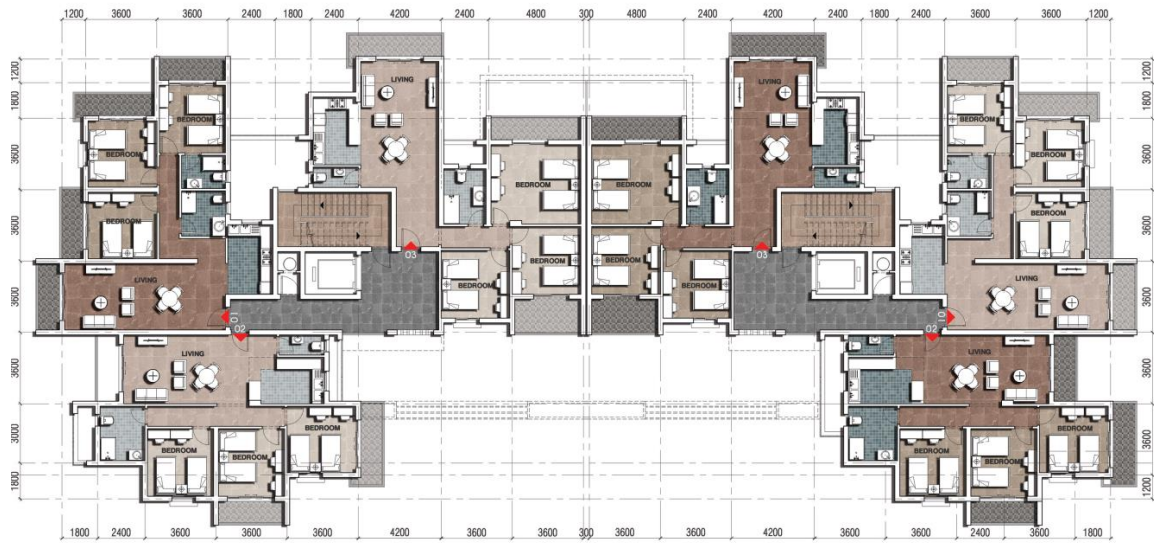




3D Perspective



3D Shots



The design of outdoor squares is what distinguishes dorms and major residential communities because it realizes that landscape architecture plays a pivotal and effective role in creating the necessary environment for students .

As for international students, the task is more difficult and this difficulty lies in trying to reduce the sense of alienation for the incoming student and create a natural environment similar to the environment in his home country, through the use of climate studies to localize plants similar to the original plants in his home country or the settlement of plants themselves if climate conditions allow So, this is what we have tried to accomplish during the study and design of landscape architecture.



The report presents the landscape vision or each zone classification function as well as the aesthetics criteria. The main sheet "landscape zones " has 9 primary sections :

- Windbreakers
- Buffer zones
- Outskirt
- Inner spaces
- Main pass
- Residential zone

Windbreakers and Buffer zones

The landscape theme creates berms as buffer and filter between the outer area and the camps planted with a variety of special trees , shrubs and ground cover that protect against high and swirling winds , particular attentions given to enhance the overall aesthetics both from the outside looking in and for campus users. Sports activities will be encouraged in the area by creating jogging paths and recreation areas.

Desert landscape

A splended aesthetics combination of and landscape cooied by desert landscape. It offers a contrast between an Egyptian and landscape design . Splattered with pedestrian pathways along citrus trees laid over stone and gravel much and the desert landscape that use aerators made of ponds with beautiful aquatic plants and shrubs .

